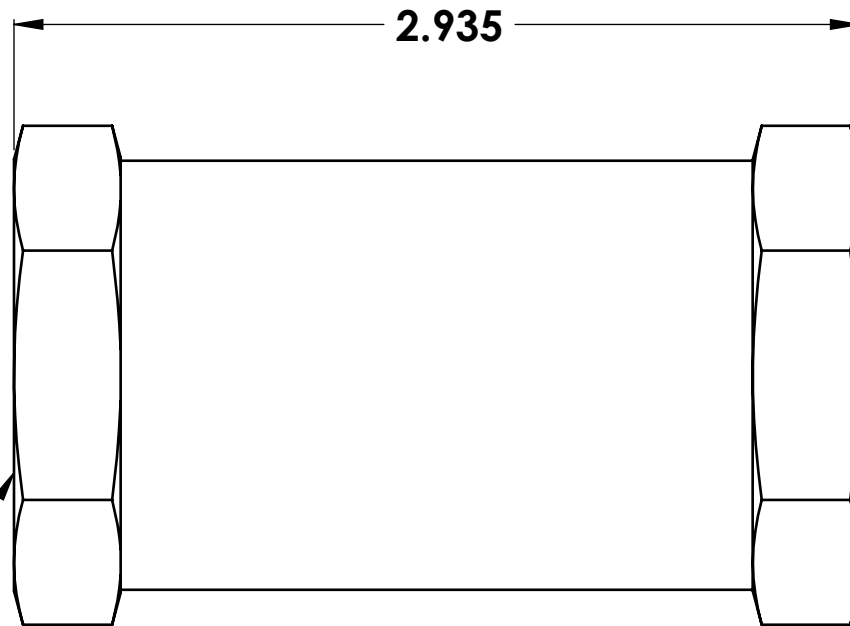


1/2" -14 NPT (2x)



X	MATERIAL	DIMENSIONS ARE IN INCHES
2	BRASS	TOLERANCES:
4B	12L14	FRACTIONAL $\pm 1/32$
5	303 SST	ANGULAR: MACH $\pm .5^\circ$ BEND $\pm .5^\circ$
5L	17-4 SST	TWO PLACE DECIMAL $\pm .01$
5C	316 SST	THREE PLACE DECIMAL $\pm .005$
1C	6061 ALUM	FINISH 63 RMS

VALVE CHECK			
SCALE	3:2	DRAWN C.N.	DATE 7/1/10
TITLE		BODY	
SIZE A	DWG. NO.	1370	REV A