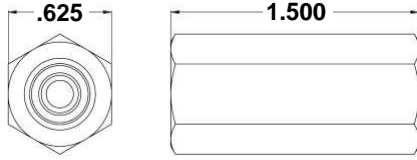


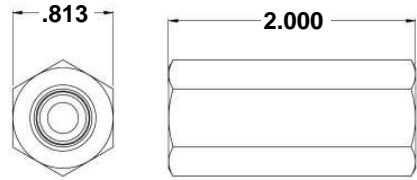
Our 6300 series check valve is a one piece high pressure design that contains a fully captivated seal with a metal to metal backup, which allows for longer service life!

1PP



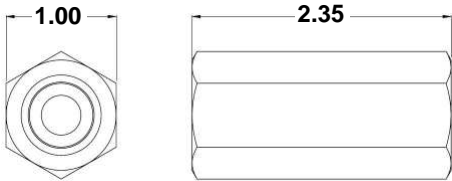
1/8" FNPT x 1/8" FNPT	
Max Pressure	10,000 psi
Orifice size	.xxx
Flow Coefficient: Cv:	.35
Cracking pressure currently available	.xxx psi

2PP



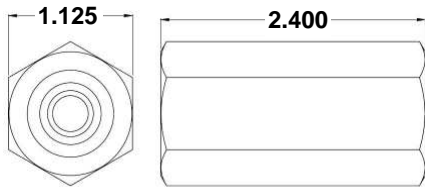
1/4" FNPT x 1/4" FNPT	
Max Pressure	10,000 psi
Orifice size	.xxx
Flow Coefficient: Cv:	.85
Cracking pressure currently available	.xxx psi

3PP



3/8" FNPT x 3/8" FNPT	
Max Pressure	10,000 psi
Orifice size	.xxx
Flow Coefficient: Cv:	1.9
Cracking pressure currently available	.xxx psi

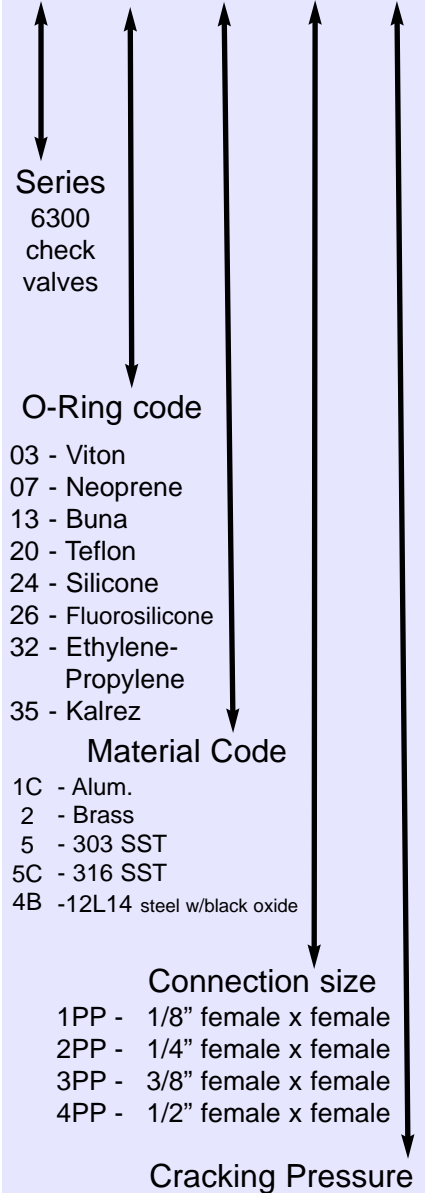
4PP



1/2" FNPT x FNPT	
Max Pressure	10,000 psi
Orifice size	.xxx
Flow Coefficient: Cv:	2.9
Cracking pressure currently available	.xxx psi

EASY ORDER
the Valve Check way

6300 - 2 - 2PP - 1



- O-Ring code
- 03 - Viton
 - 07 - Neoprene
 - 13 - Buna
 - 20 - Teflon
 - 24 - Silicone
 - 26 - Fluorosilicone
 - 32 - Ethylene-Propylene
 - 35 - Kalrez

Material Code

- 1C - Alum.
- 2 - Brass
- 5 - 303 SST
- 5C - 316 SST
- 4B - 12L14 steel w/black oxide

Connection size

- 1PP - 1/8" female x female
- 2PP - 1/4" female x female
- 3PP - 3/8" female x female
- 4PP - 1/2" female x female

Cracking Pressure

◆ **Temperature range will vary by body and o-ring material**

◆ **Other options may be available or created: tighter tolerances, materials, plating, threads and more.**

We encourage customization to meet specific applications needs

Valve Check part # description:

- 6300 series, Buna o-ring,
- Brass
- 1/4 inch female x female
- Cracking pressure: 1 psi