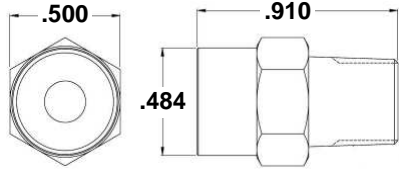


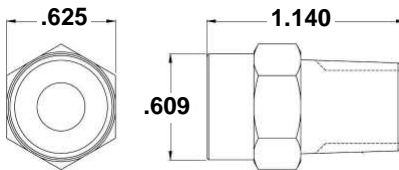
*Our 200 series vent to atmosphere relief valve is a highly accurate design that offers excellent repeatability and dependability. Cracking pressure is factory set and valves are 100% tested to ensure accuracy.*

**1M**



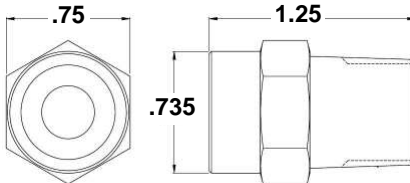
| 1/8" MNPT x vent                      |                 |
|---------------------------------------|-----------------|
| Max Pressure                          | 200 psi         |
| Orifice size                          | .188            |
| Flow:                                 | Consult factory |
| Cracking pressure currently available | .5-150 psi      |

**2M**



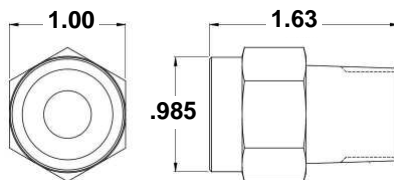
| 1/4" MNPT x vent                      |                 |
|---------------------------------------|-----------------|
| Max Pressure                          | 200 psi         |
| Orifice size                          | .275            |
| Flow:                                 | Consult factory |
| Cracking pressure currently available | .5-150 psi      |

**3M**



| 3/8" MNPT x vent                      |                 |
|---------------------------------------|-----------------|
| Max Pressure                          | 200 psi         |
| Orifice size                          | .325            |
| Flow:                                 | Consult factory |
| Cracking pressure currently available | .5-150 psi      |

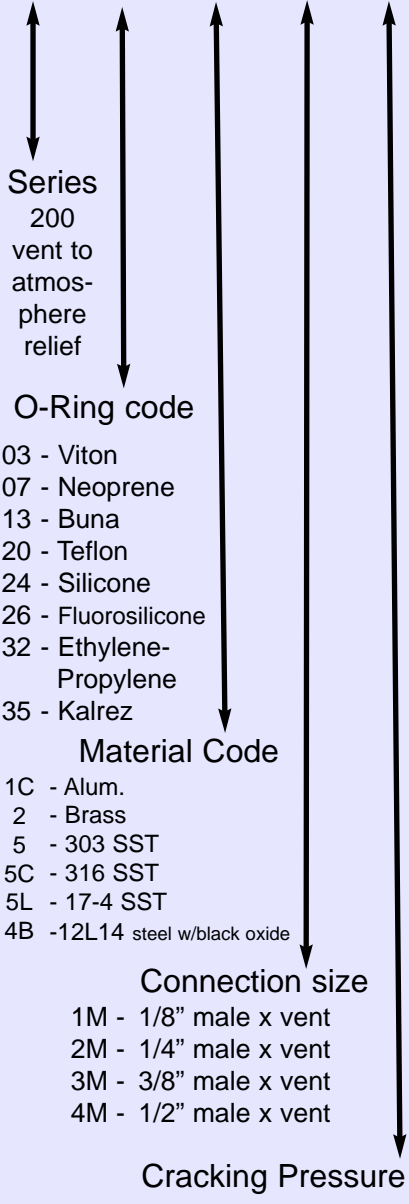
**4M**



| 1/2" MNPT x vent                      |                 |
|---------------------------------------|-----------------|
| Max Pressure                          | 200 psi         |
| Orifice size                          | .415            |
| Flow:                                 | Consult factory |
| Cracking pressure currently available | .5-150 psi      |

**EASY ORDER**  
the Valve Check way

**213 - 2 - 2M - 10**



Series  
200  
vent to atmosphere relief

O-Ring code

- 03 - Viton
- 07 - Neoprene
- 13 - Buna
- 20 - Teflon
- 24 - Silicone
- 26 - Fluorosilicone
- 32 - Ethylene-Propylene
- 35 - Kalrez

Material Code

- 1C - Alum.
- 2 - Brass
- 5 - 303 SST
- 5C - 316 SST
- 5L - 17-4 SST
- 4B - 12L14 steel w/black oxide

Connection size

- 1M - 1/8" male x vent
- 2M - 1/4" male x vent
- 3M - 3/8" male x vent
- 4M - 1/2" male x vent

Cracking Pressure

◆ **Standard set pressure tolerance is +/- 5%**  
 ◆ **Temperature range will vary by body and o-ring material**  
 ◆ **Dust cover option available (Start part # with "D")**  
 Example: D213-2-2M-10  
 ◆ **Other options may be available or created: tighter tolerances, materials, plating, threads and more.**  
**We encourage customization to meet specific applications needs**

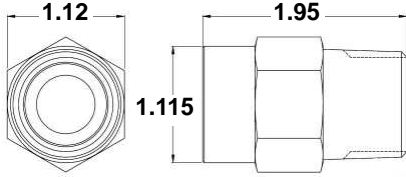
**Valve Check part # description:**

- 200 series, Buna o-ring,
- Brass
- 1/4 inch male x vent
- Cracking pressure: 10 psi

*Our 200 series vent to atmosphere relief valve is a highly accurate design that offers excellent repeatability and dependability. Cracking pressure is factory set and valves are 100% tested to ensure accuracy.*



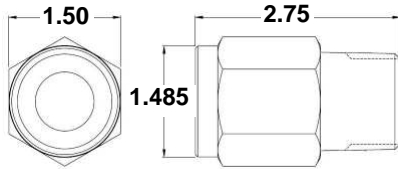
6M



|                                       |                 |
|---------------------------------------|-----------------|
| <b>3/4" MNPT x vent</b>               |                 |
| Max Pressure                          | 200 psi         |
| Orifice size                          | .510            |
| Flow:                                 | Consult factory |
| Cracking pressure currently available | .5-150 psi      |



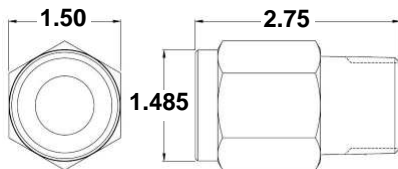
8M



|                                       |                 |
|---------------------------------------|-----------------|
| <b>1" MNPT x vent</b>                 |                 |
| Max Pressure                          | 200 psi         |
| Orifice size                          | .620            |
| Flow:                                 | Consult factory |
| Cracking pressure currently available | .5-150 psi      |



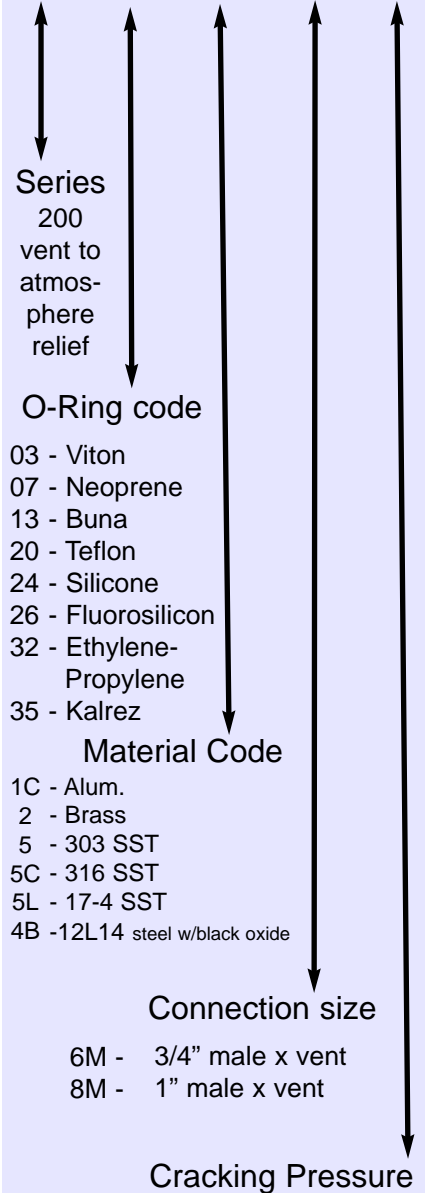
8M



|                                       |                 |
|---------------------------------------|-----------------|
| <b>1" MNPT x vent</b>                 |                 |
| Max Pressure                          | 200 psi         |
| Orifice size                          | .620            |
| Flow:                                 | Consult factory |
| Cracking pressure currently available | .5-150 psi      |

**EASY ORDER**  
the Valve Check way

**213 - 2 - 6M - 10**



Series  
200  
vent to atmosphere relief

O-Ring code

- 03 - Viton
- 07 - Neoprene
- 13 - Buna
- 20 - Teflon
- 24 - Silicone
- 26 - Fluorosilicon
- 32 - Ethylene-Propylene
- 35 - Kalrez

Material Code

- 1C - Alum.
- 2 - Brass
- 5 - 303 SST
- 5C - 316 SST
- 5L - 17-4 SST
- 4B - 12L14 steel w/black oxide

Connection size

- 6M - 3/4" male x vent
- 8M - 1" male x vent

Cracking Pressure

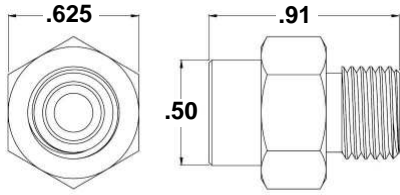
◆ **Standard set pressure tolerance is +/- 5%**  
 ◆ **Temperature range will vary by body and o-ring material**  
 ◆ **Dust cover option available (Start part # with "D")**  
 Example: D213-2-2M-10  
 ◆ **Other options may be available or created: tighter tolerances, materials, plating, threads and more.**  
**We encourage customization to meet specific applications needs**

**Valve Check part # description:**

- 200 series, Buna o-ring,
- Brass
- 3/4 inch male x vent
- Cracking pressure: 10 psi

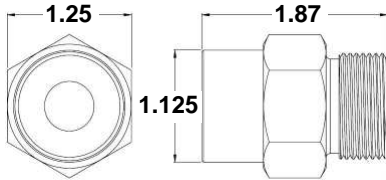
*Our 200 series vent to atmosphere relief valve is a highly accurate design that offers excellent repeatability and dependability. Cracking pressure is factory set and valves are 100% tested to ensure accuracy.*

**4ST**



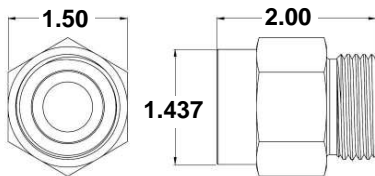
|  |                 |
|--|-----------------|
| <b>7/16-20 UNF-3 x vent</b><br>Straight thread for o-ring seal |                 |
| Max Pressure   | 200 psi         |
| Orifice size   | .188            |
| Flow:  | Consult factory |
| Cracking pressure currently available                          | .5-150 psi      |

**12ST**



|  |                 |
|--|-----------------|
| <b>1-1/16-12 UNF-3 x vent</b><br>Straight thread for o-ring seal |                 |
| Max Pressure   | 200 psi         |
| Orifice size   | .510            |
| Flow:  | Consult factory |
| Cracking pressure currently available                            | .5-150 psi      |

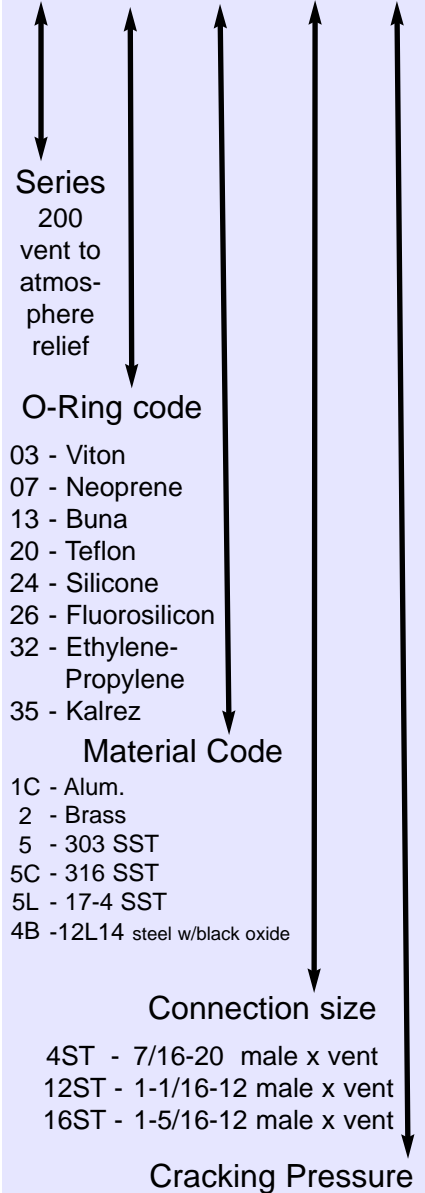
**16ST**



|  |                 |
|--|-----------------|
| <b>1-5/16-12 UNF-3 x vent</b><br>Straight thread for o-ring seal |                 |
| Max Pressure   | 200 psi         |
| Orifice size   | .620            |
| Flow:  | Consult factory |
| Cracking pressure currently available                            | .5-150 psi      |

**EASY ORDER**  
the Valve Check way

**213 - 2 - 12ST - 10**



Series  
200  
vent to atmosphere relief

O-Ring code

- 03 - Viton
- 07 - Neoprene
- 13 - Buna
- 20 - Teflon
- 24 - Silicone
- 26 - Fluorosilicon
- 32 - Ethylene-Propylene
- 35 - Kalrez

Material Code

- 1C - Alum.
- 2 - Brass
- 5 - 303 SST
- 5C - 316 SST
- 5L - 17-4 SST
- 4B - 12L14 steel w/black oxide

Connection size

- 4ST - 7/16-20 male x vent
- 12ST - 1-1/16-12 male x vent
- 16ST - 1-5/16-12 male x vent

Cracking Pressure

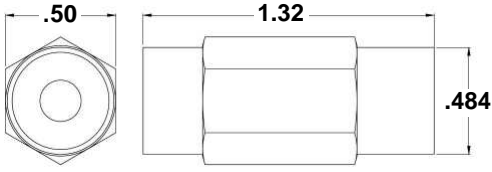
**Valve Check part # description:**

- 200 series, Buna o-ring,
- Brass
- 1-1/16" male x vent
- Cracking pressure: 10 psi

◆ **Standard set pressure tolerance is +/- 5%**  
 ◆ **Temperature range will vary by body and o-ring material**  
 ◆ **Dust cover option available (Start part # with "D")**  
 Example: D213-2-2M-10  
 ◆ **Other options may be available or created: tighter tolerances, materials, plating, threads and more.**  
**We encourage customization to meet specific applications needs**

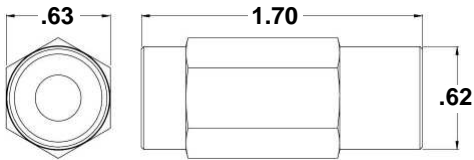
*Our 200 series vent to atmosphere relief valve is a highly accurate design that offers excellent repeatability and dependability. Cracking pressure is factory set and valves are 100% tested to ensure accuracy.*

1P



| 1/8" FNPT x vent                      |                 |
|---------------------------------------|-----------------|
| Max Pressure                          | 200 psi         |
| Orifice size                          | .188            |
| Flow:                                 | Consult factory |
| Cracking pressure currently available | .5-150 psi      |

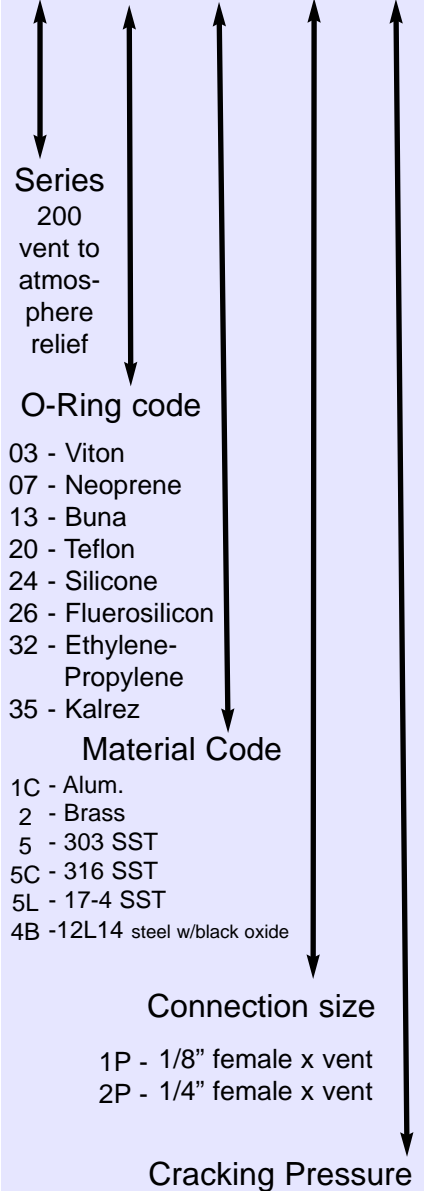
2P



| 1/4" FNPT x vent                      |                 |
|---------------------------------------|-----------------|
| Max Pressure                          | 200 psi         |
| Orifice size                          | .275            |
| Flow:                                 | Consult factory |
| Cracking pressure currently available | .5-150 psi      |

**EASY ORDER**  
the Valve Check way

**213 - 2 - 2P - 10**



◆ **Standard set pressure tolerance is +/- 5%**

◆ **Temperature range will vary by body and o-ring material**

◆ **Dust cover option available (Start part # with "D")**  
Example: D213-2-2M-10

◆ **Other options may be available or created: tighter tolerances, materials, plating, threads and more.**  
**We encourage customization to meet specific applications needs**

**Valve Check part # description:**

- 200 series, Buna o-ring,
- Brass
- 1/4 inch female x vent
- Cracking pressure: 10 psi