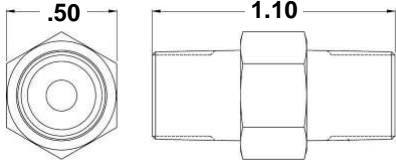


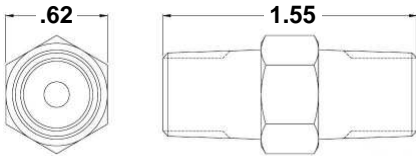
*Our 6100 series has an external poppet which enables it to be a self cleaning inline valve.
Combine a captivated teflon seal with a factory set design and this is the best inline relief valve on the market!*

1 MM



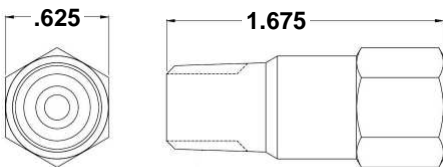
1/8" MNPT x MNPT	
Max Pressure	3000 psi
Orifice size	.140
Flow:	Consult factory
Cracking pressure currently available	.5-150 psi

2 MM



1/4" MNPT x MNPT	
Max Pressure	3000 psi
Orifice size	.155
Flow:	Consult factory
Cracking pressure currently available	.5-250 psi

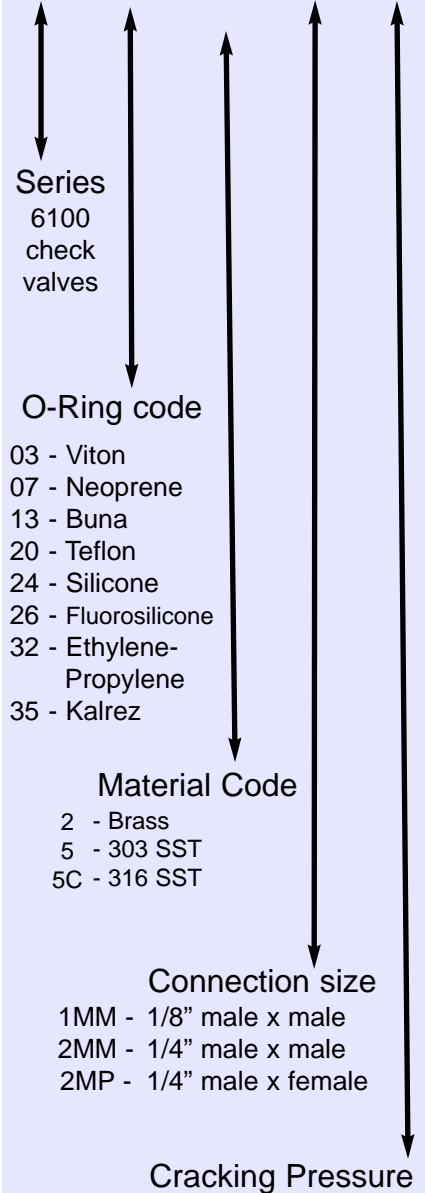
2 MP



1/4" MNPT x FNPT	
Max Pressure	3000 psi
Orifice size	.155
Flow:	Consult factory
Cracking pressure currently available	.5-250 psi

EASY ORDER
the Valve Check way

6120 -5C-2MM-10



- 03 - Viton
- 07 - Neoprene
- 13 - Buna
- 20 - Teflon
- 24 - Silicone
- 26 - Fluorosilicone
- 32 - Ethylene-Propylene
- 35 - Kalrez

- 2 - Brass
- 5 - 303 SST
- 5C - 316 SST

- 1MM - 1/8" male x male
- 2MM - 1/4" male x male
- 2MP - 1/4" male x female

◆ **Standard set pressure tolerance is +/- 5%**

◆ **Temperature range will vary by body and o-ring material**

◆ **Dust cover option available (Start part # with "D")**

Example: D213-2-2M-10

◆ **Other options may be available or created:**
tighter tolerances, materials, plating, threads and more.

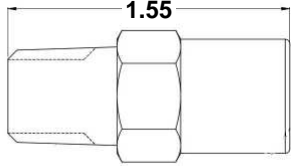
We encourage customization to meet specific applications needs.

Valve Check part # description:

- 6100 series, Teflon o-ring,
- 316 SST
- 1/4 inch male x male
- Cracking pressure: 10 psi

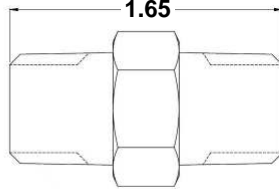
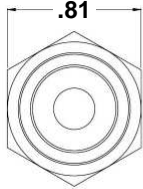
Our 6100 series has an external poppet which enables it to be a self cleaning inline valve. Combine a captivated teflon seal with a factory set design and this is the best inline relief valve on the market!

1P2M



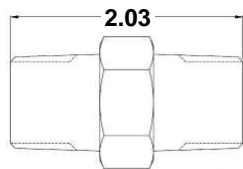
1/8" FNPT x 1/4" MNPT	
Max Pressure	3000 psi
Orifice size	.155
Flow:	Consult factory
Cracking pressure currently available	.5-250 psi

3 MM



3/8" MNPT x MNPT	
Max Pressure	3000 psi
Orifice size	.250
Flow:	Consult factory
Cracking pressure currently available	.5-150 psi

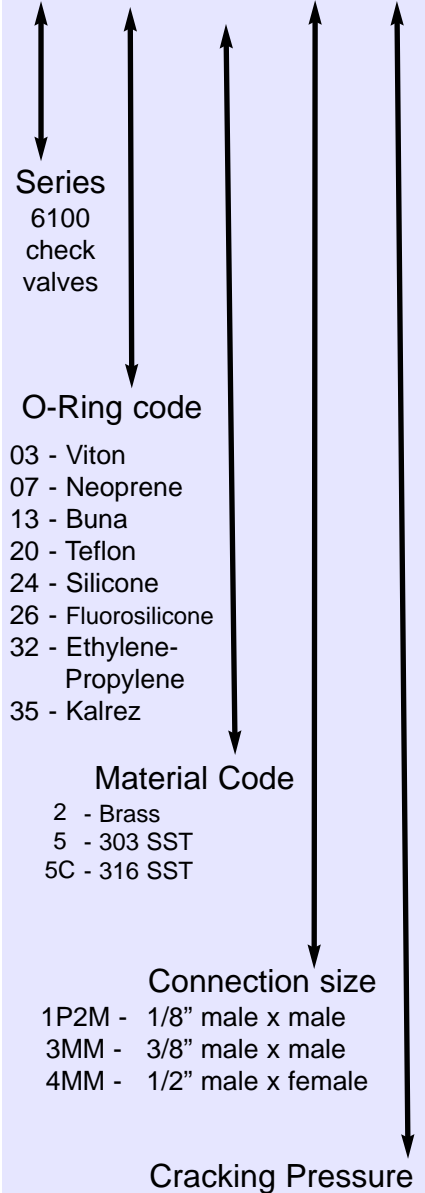
4 MM



1/2" MNPT x MNPT	
Max Pressure	3000 psi
Orifice size	.359
Flow:	Consult factory
Cracking pressure currently available	.5-150 psi

EASY ORDER
the Valve Check way

6120 -5C-3MM-10



◆ **Standard set pressure tolerance is +/- 5%**
 ◆ **Temperature range will vary by body and o-ring material**
 ◆ **Dust cover option available (Start part # with "D")**
 Example: D213-2-2M-10
 ◆ **Other options may be available or created: tighter tolerances, materials, plating, threads and more.**
We encourage customization to meet specific applications needs

Valve Check part # description:

- 6100 series, Teflon o-ring,
- 316 SST body
- 3/8 inch male x male
- Cracking pressure: 10 psi