

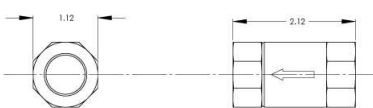
"Same high flow design as the brass version, except this stainless steel valve with teflon seal is ideal for your steam applications or anything else in your system that may be highly corrosive."

2PP



1/4" FNPT x FNPT	
Max Pressure	400 psi
Orifice size	.4
Flow Coefficient: Cv:	..85
Cracking pressure currently available	.5psi

3PP



3/8" FNPT x FNPT	
Max Pressure	400 psi
Orifice size	.5
Flow Coefficient: Cv:	1.21
Cracking pressure currently available	.5psi

4PP

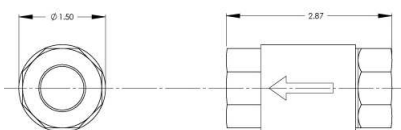
photo to come



1/2" FNPT x FNPT	
Max Pressure	400 psi
Orifice size	call us
Flow Coefficient: Cv:	1.40
Cracking pressure currently available	.5psi

6PP

photo to come



3/4" FNPT x FNPT	
Max Pressure	400 psi
Orifice size	call us
Flow Coefficient: Cv:	3.53
Cracking pressure currently available	.5psi

EASY ORDER
the Valve Check way

U6 20 - 5 - 2PP - .5

Series U600 checks

O-Ring code
20 - Teflon

Material Code
5 - Stainless Steel

Connection size
2PP - 1/4" female x female
3PP - 3/8" female x female
4PP - 1/2" female x female
6PP - 3/4" female x female

Cracking Pressure

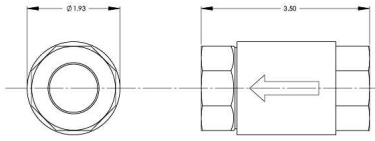
Cracking pressure tolerance is +/- 5%
Temperature range will vary by body and o-ring material
Other options may be available upon request

- Valve Check part # description:**
- U600 series, Teflon o-ring,
 - Stainless steel
 - 1/4 inch female x female
 - Cracking pressure: .5 psi

"Same high flow design as the brass version, except this stainless steel valve with teflon seal is ideal for your steam applications or anything else in your system that may be highly corrosive."

8PP

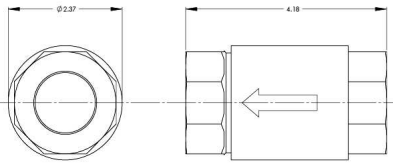
photo to come



1" FNPT x FNPT	
Max Pressure	400 psi
Orifice size	call us
Flow Coefficient: Cv:	6
Cracking pressure currently available	.5psi

10PP

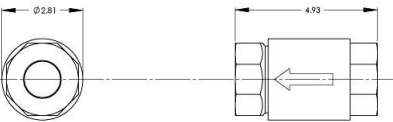
Consult factory



1-1/4" FNPT x FNPT	
Max Pressure	400 psi
Orifice size	call us
Flow Coefficient: Cv:	44
Cracking pressure currently available	.5psi

12PP

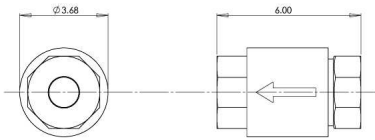
Consult factory



1-1/2" FNPT x FNPT	
Max Pressure	400 psi
Orifice size	call us
Flow Coefficient: Cv:	65
Cracking pressure currently available	.5psi

16PP

Consult factory



2" FNPT x FNPT	
Max Pressure	400 psi
Orifice size	call us
Flow Coefficient: Cv:	81
Cracking pressure currently available	.5psi

EASY ORDER
the Valve Check way

U6 20 - 5 - 8PP - .5

Series U600 checks

O-Ring code
20 - Teflon

Material Code
5 - Stainless Steel

Connection size
8PP - 1" female x female
10PP - 1-1/4" female x female
12PP - 1-1/2" female x female
16PP - 2" female x female

Cracking Pressure

Cracking pressure tolerance is +/- 5%
Temperature range will vary by body and o-ring material
Other options may be available upon request

- Valve Check part # description:**
- U600 series, Teflon o-ring,
 - Stainless steel 1" female x female
 - Cracking pressure: .5 psi