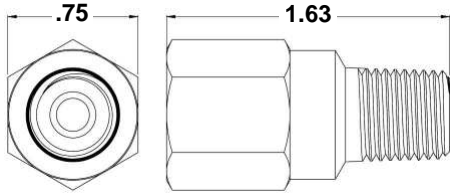


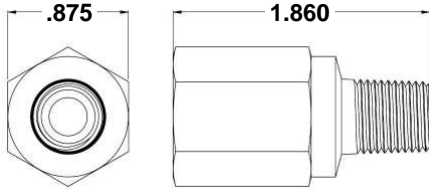
Our 200MP series is a compact inline relief valve with a highly accurate design that offers the dependability you expect. Factory set and 100% tested to ensure accuracy.

2MP



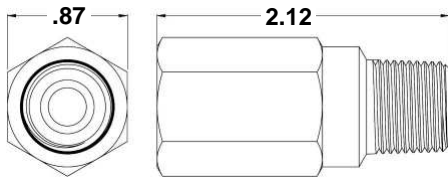
1/4" MNPT x FNPT	
Max Pressure	200 psi
Orifice size	.190
Flow:	Consult factory
Cracking pressure currently available	.5-150 psi

2M3P



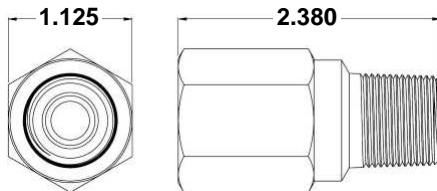
1/4" MNPT x 3/8" FNPT	
Max Pressure	200 psi
Orifice size	.325
Flow:	Consult factory
Cracking pressure currently available	.5-150 psi

3MP



3/8" MNPT x FNPT	
Max Pressure	200 psi
Orifice size	.277
Flow:	Consult factory
Cracking pressure currently available	.5-150 psi

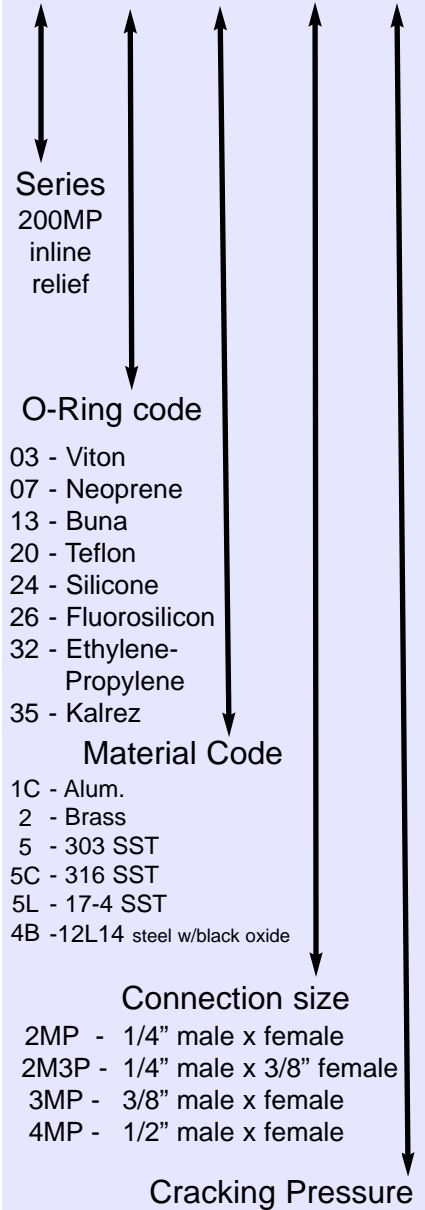
4MP



1/2" MNPT x FNPT	
Max Pressure	200 psi
Orifice size	.350
Flow:	Consult factory
Cracking pressure currently available	.5-150 psi

EASY ORDER the Valve Check way

213 - 2 - 2MP - 10



Valve Check part # description:

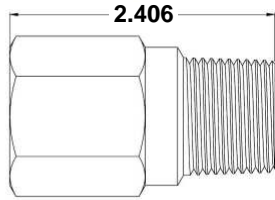
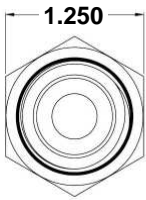
- 200MP series, Buna o-ring,
- Brass
- 1/4" male x female
- Cracking pressure: 10 psi

- ◆ Standard set pressure tolerance is +/- 5%
- ◆ Temperature range will vary by body and o-ring material
- ◆ Other options may be available or created: tighter tolerances, materials, plating, threads and more.

We encourage customization to meet specific applications needs

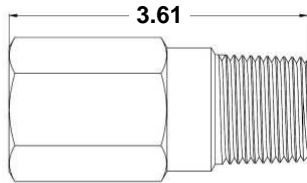
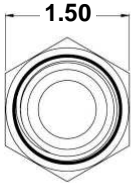
Our 200MP series is a compact inline relief valve with a highly accurate design that offers the dependability you expect. Factory set and 100% tested to ensure accuracy.

6MP



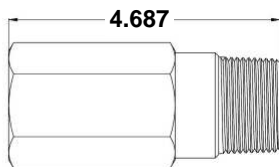
3/4" MNPT x FNPT	
Max Pressure	200 psi
Orifice size	.420
Flow:	Consult factory
Cracking pressure currently available	.5-150 psi

8MP



1" MNPT x FNPT	
Max Pressure	200 psi
Orifice size	.510
Flow:	Consult factory
Cracking pressure currently available	.5-150 psi

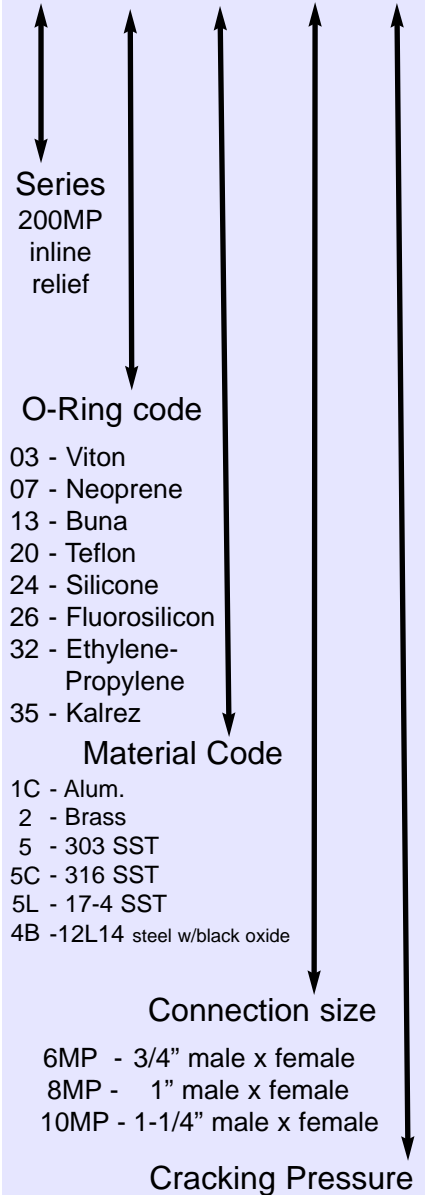
10MP



1-1/4" MNPT x FNPT	
Max Pressure	200 psi
Orifice size	.625
Flow:	Consult factory
Cracking pressure currently available	.5-150 psi

EASY ORDER
the Valve Check way

213 - 2 - 6MP - 10



Valve Check part # description:

- 200MP series, Buna o-ring,
- Brass
- 3/4" male x female
- Cracking pressure: 10 psi

◆ **Standard set pressure tolerance is +/- 5%**

◆ **Temperature range will vary by body and o-ring material**

◆ **Other options may be available or created: tighter tolerances, materials, plating, threads and more.**

We encourage customization to meet specific applications needs