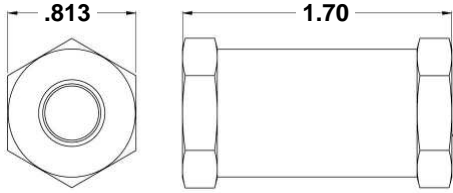


Our 600 series is ideal for large flow, zero leak applications.

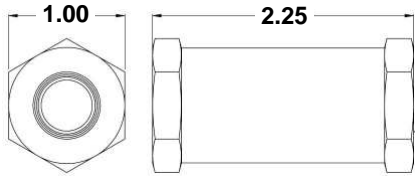
A free floating o-ring design paired with a full port piston ensures maximum flow and minimal particle buildup.

1PP



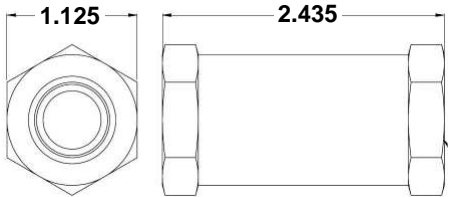
1/8" FNPT x FNPT	
Max Pressure	3000 psi
Orifice size	.340
Flow Coefficient: Cv:	1.8
Cracking pressure currently available	.5-5 psi

2PP



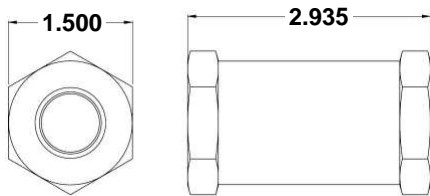
1/4" FNPT x FNPT	
Max Pressure	3000 psi
Orifice size	.440
Flow Coefficient: Cv:	2.9
Cracking pressure currently available	.5-5 psi

3PP



3/8" FNPT x FNPT	
Max Pressure	3000 psi
Orifice size	.502
Flow Coefficient: Cv:	3.7
Cracking pressure currently available	.5-5 psi

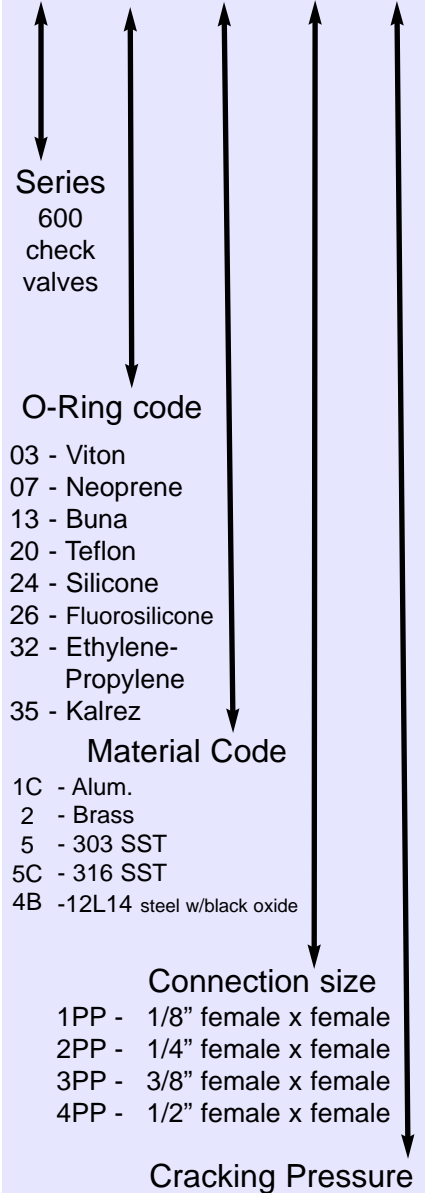
4PP



1/2" FNPT x FNPT	
Max Pressure	3000 psi
Orifice size	.700
Flow Coefficient: Cv:	7.2
Cracking pressure currently available	.5-5 psi

EASY ORDER
the Valve Check way

613 - 2 - 2PP - 1



- 03 - Viton
- 07 - Neoprene
- 13 - Buna
- 20 - Teflon
- 24 - Silicone
- 26 - Fluorosilicone
- 32 - Ethylene-Propylene
- 35 - Kalrez

- 1C - Alum.
- 2 - Brass
- 5 - 303 SST
- 5C - 316 SST
- 4B - 12L14 steel w/black oxide

- 1PP - 1/8" female x female
- 2PP - 1/4" female x female
- 3PP - 3/8" female x female
- 4PP - 1/2" female x female

◆ **Temperature range will vary by body and o-ring material**

◆ **Other options may be available or created: tighter tolerances, materials, plating, threads and more.**

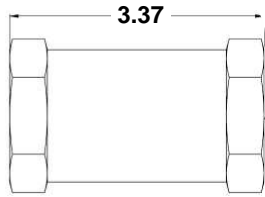
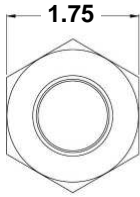
We encourage customization to meet specific applications needs

Valve Check part # description:

- 600 series, Buna o-ring,
- Brass
- 1/4 inch female x female
- Cracking pressure: 1 psi

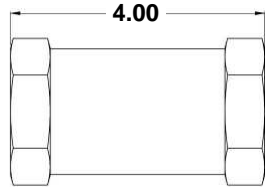
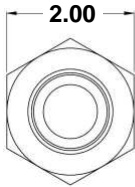
Our 600 series is ideal for large flow, zero leak applications. A free floating o-ring design paired with a full port piston ensures maximum flow and minimal particle buildup.

6PP



3/4" FNPT x FNPT	
Max Pressure	3000 psi
Orifice size	.920
Flow Coefficient: Cv:	11
Cracking pressure currently available	.5-5 psi

8PP



1" FNPT x FNPT	
Max Pressure	3000 psi
Orifice size	.970
Flow Coefficient: Cv:	13.7
Cracking pressure currently available	.5-5 psi

10PP



1-1/4" FNPT x FNPT	
Max Pressure	3000 psi
Orifice size	1.36
Flow Coefficient: Cv:	26
Cracking pressure currently available	.5-5 psi

EASY ORDER
the Valve Check way

613 - 2 - 6PP - 1

Series
600
check
valves

O-Ring code

- 03 - Viton
- 07 - Neoprene
- 13 - Buna
- 20 - Teflon
- 24 - Silicone
- 26 - Fluorosilicone
- 32 - Ethylene-Propylene
- 35 - Kalrez

Material Code

- 1C - Alum.
- 2 - Brass
- 5 - 303 SST
- 5C - 316 SST
- 4B - 12L14 steel w/black oxide

Connection size

- 6PP - 3/4" female x female
- 8PP - 1" female x female
- 10PP - 1-1/4" female x female

Cracking Pressure

◆ **Temperature range will vary by body and o-ring material**

◆ **Other options may be available or created: tighter tolerances, materials, plating, threads and more.**

We encourage customization to meet specific applications needs

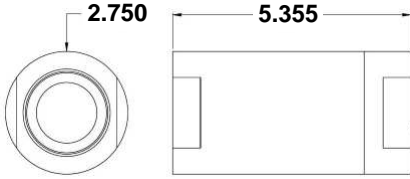
Valve Check part # description:

- 600 series, Buna o-ring,
- Brass
- 3/4 inch female x female
- Cracking pressure: 1 psi

Our 600 series is ideal for large flow, zero leak applications.

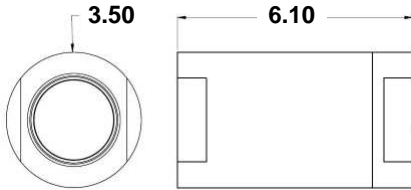
A free floating o-ring design paired with a full port piston ensures maximum flow and minimal particle buildup.

12PP



1-1/2" FNPT x FNPT	
Max Pressure	3000 psi
Orifice size	1.36
Flow Coefficient: Cv:	26
Cracking pressure currently available	.5-5 psi

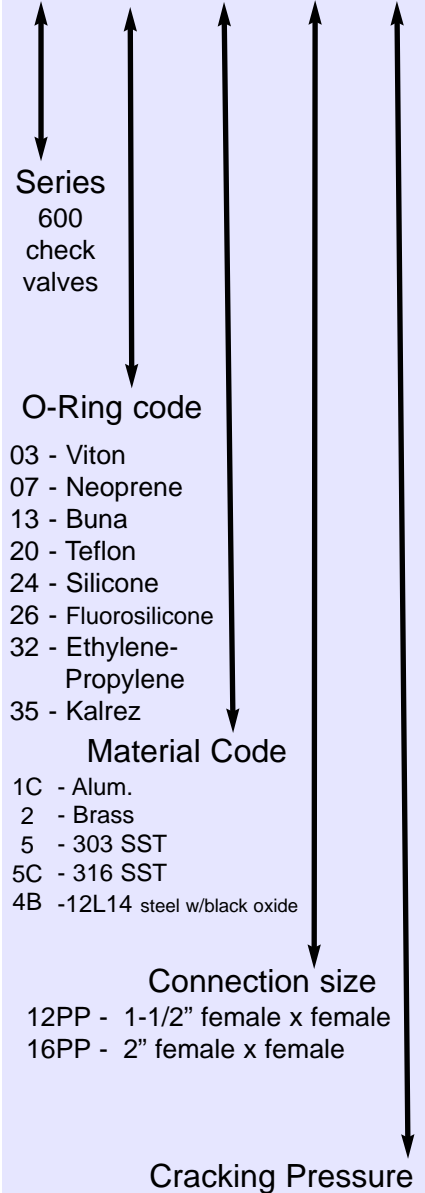
16PP



2" FNPT x FNPT	
Max Pressure	3000 psi
Orifice size	2.09
Flow Coefficient: Cv:	51.2
Cracking pressure currently available	.5-5 psi

EASY ORDER
the Valve Check way

613 - 2 - 12PP - 5



- 03 - Viton
 - 07 - Neoprene
 - 13 - Buna
 - 20 - Teflon
 - 24 - Silicone
 - 26 - Fluorosilicone
 - 32 - Ethylene-Propylene
 - 35 - Kalrez
- Material Code**
- 1C - Alum.
 - 2 - Brass
 - 5 - 303 SST
 - 5C - 316 SST
 - 4B - 12L14 steel w/black oxide

Connection size
12PP - 1-1/2" female x female
16PP - 2" female x female

Cracking Pressure

Valve Check part # description:

- 600 series, Buna o-ring,
- Brass
- 1-1/2 inch female x female
- Cracking pressure: 5 psi

◆ **Temperature range will vary by body and o-ring material**

◆ **Other options may be available or created:
tighter tolerances, materials, plating, threads and more.**

We encourage customization to meet specific applications needs