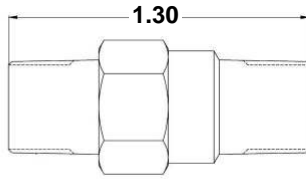
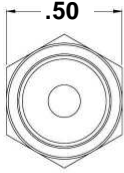


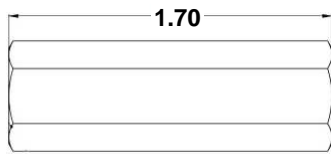
*Our 6200 series is an economical, dependable valve that offers high repeatability with a bubble tight seal.*

**1 MM**



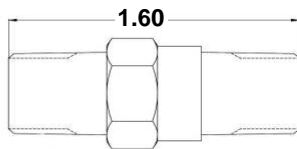
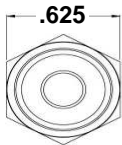
1/8" MNPT x MNPT	
Max Pressure	800 psi
Orifice size	.140
Flow Coefficient: Cv:	.6
Cracking pressure currently available	1, 2, 3 psi

**1 PP**



1/8" FNPT x FNPT	
Max Pressure	800 psi
Orifice size	.140
Flow Coefficient: Cv:	.6
Cracking pressure currently available	1, 2, 3 psi

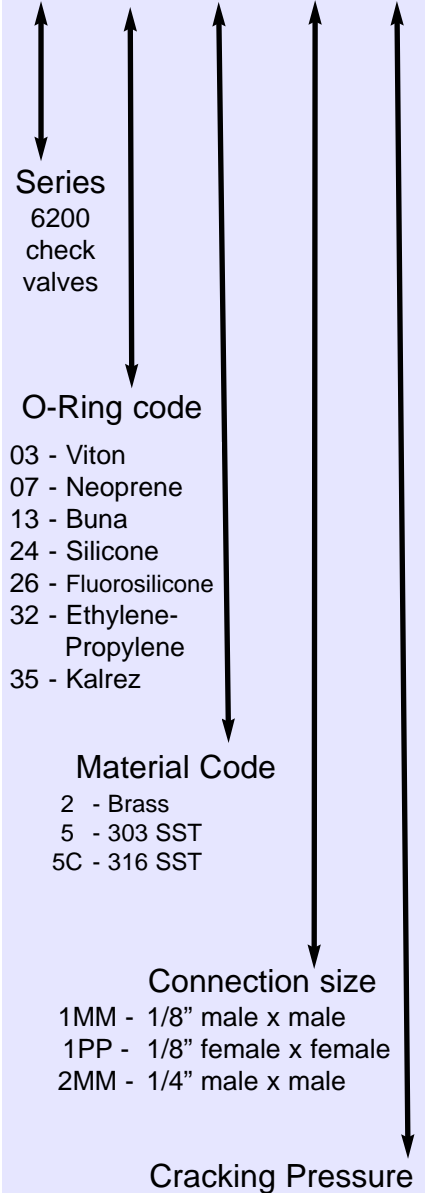
**2 MM**



1/4" MNPT x MNPT	
Max Pressure	800 psi
Orifice size	.217
Flow Coefficient: Cv:	1.0
Cracking pressure currently available	.8, 1.5, 3, 10 psi

**EASY ORDER**  
the Valve Check way

**6213 -5C-2MM- 1**



◆ **Temperature range will vary by body and o-ring material**

◆ **Other options may be available or created:  
tighter tolerances, materials, plating, threads and more.**

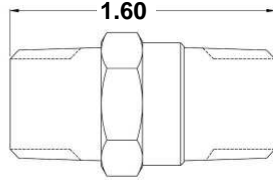
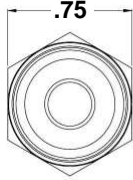
**We encourage customization to meet specific applications needs**

**Valve Check part # description:**

- 6200 series, Buna o-ring,
- 316 SST
- 1/4 inch male x male
- Cracking pressure: 1 psi

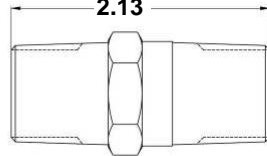
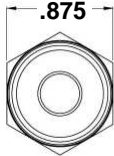
*Our 6200 series is an economical, dependable valve that offers high repeatability with a bubble tight seal.*

**3 MM**



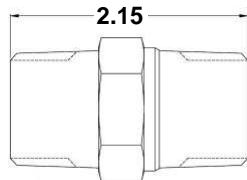
3/8" MNPT x MNPT	
Max Pressure	800 psi
Orifice size	.265
Flow Coefficient: Cv:	1.3
Cracking pressure currently available	.5 - 3 psi

**4 MM**



1/2" MNPT x MNPT	
Max Pressure	800 psi
Orifice size	.325
Flow Coefficient: Cv:	2.2
Cracking pressure currently available	.5 - 3 psi

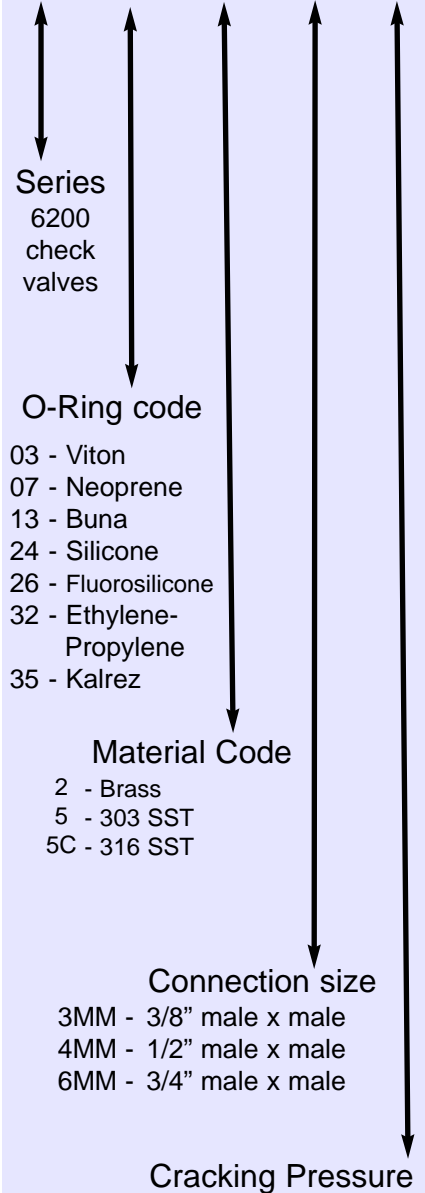
**6 MM**



3/4" MNPT x MNPT	
Max Pressure	800 psi
Orifice size	.530
Flow Coefficient: Cv:	5.4
Cracking pressure currently available	.5 - 3 psi

**EASY ORDER**  
the Valve Check way

**6203 -5C-4MM- 3**



◆ *Temperature range will vary by body and o-ring material*

◆ *Other options may be available or created:  
tighter tolerances, materials, plating, threads and more.*

*We encourage customization to meet specific applications needs*

**Valve Check part # description:**

- 6200 series, Viton o-ring,
- 316 SST
- 1/2 inch male x male
- Cracking pressure: 3 psi