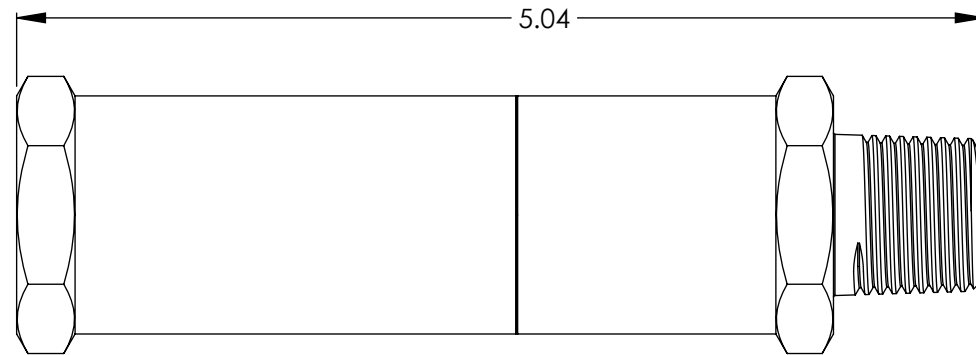
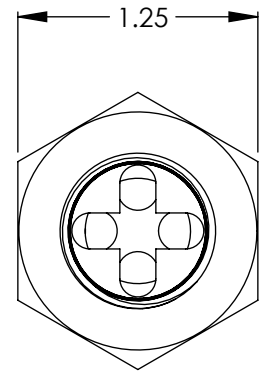
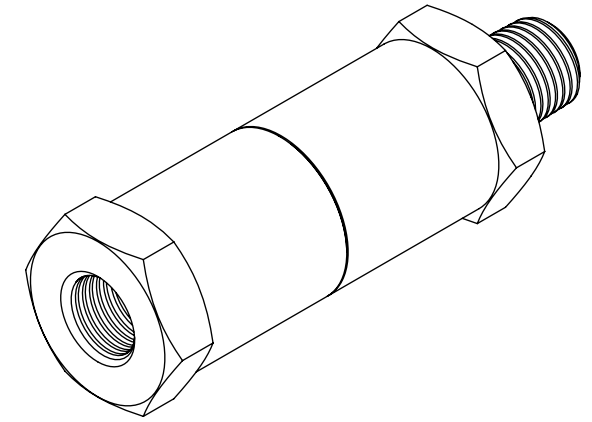


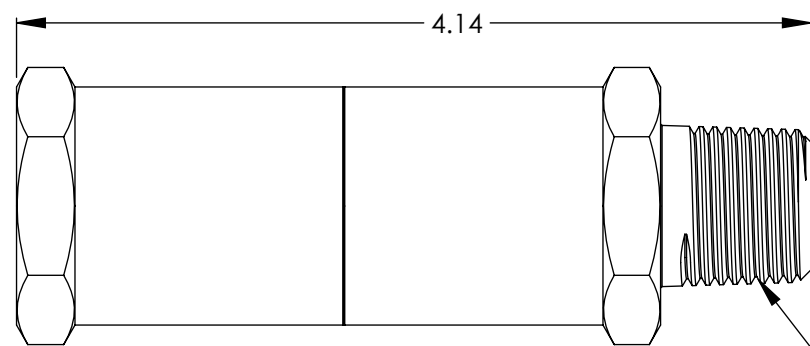
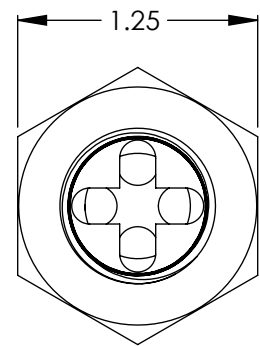
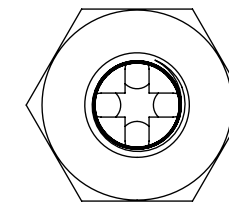
Ordering Code: 23XX-X-XXX-XXXX

Example: 2320-2-2MP-500

Series	O-ring	Material	Connection	Crack Pressure
2300	03 - Viton 07 - Neoprene 13 - Buna 20 - Teflon 32 - Ethylene Propylene	2 - Brass 5C - 316 SST	1MP - 1/8" Male NPT x 1/8" Female NPT 2MP - 1/4" Male NPT x 1/4" Female NPT 3MP - 3/8" Male NPT x 3/8" Female NPT 4MP - 1/2" Male NPT x 1/2" Female NPT 6MP - 3/4" Male NPT x 3/4" Female NPT 8MP - 1" Male NPT x 1" Female NPT	10-2400 psi

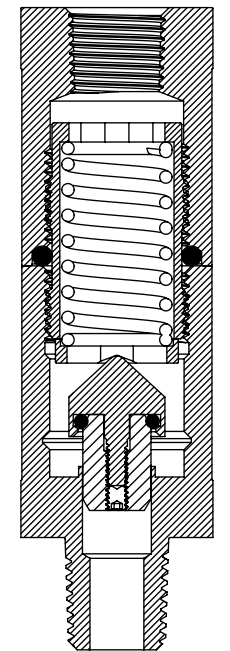
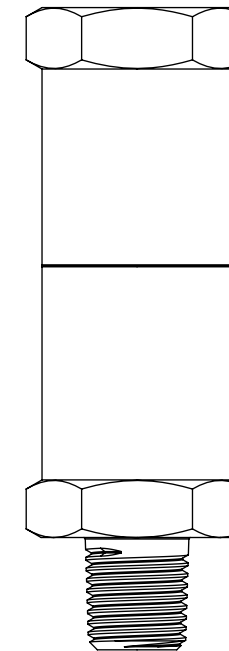


Length for crack pressures  
between 451 psi to 2400 psi



Length for crack pressures  
between 10 psi to 450 psi

1/2-14 NPT INLET  
& OUTLET



↑  
Flow

2300 Series - 4MP

**Body Material:** Brass\*, 316 SST\*

**O-ring Material:** Buna-N\*\*, Ethylene Propylene\*\*, Viton\*\*, Neoprene\*\*, Teflon\*\*

**Spring Material:** 302 SST - Any other spring materials consult factory

**Operating Pressure:** 0 to 2400 psig (166 bar)

**Cracking Pressure:** 10 to 2400 psig (.69 bar to 166 bar) - Any crack pressure above or below standard crack pressure range consult factory

**Cracking Pressure Tolerance:** +/- 10%

**Temperature Range:** -70°F to +400°F (-56°C to +204°C) - Based on o-ring and body material

**Connection Sizes:** (1/8" MNPT x 1/8" FNPT to 1" MNPT x 1" FNPT)\*\*\*

\* Standard body materials; Consult factory for availability of other body material

\*\* Standard o-ring materials; Consult factory for availability of other o-ring material

\*\*\*Standard connections sizes; Consult factory for availability of other connection sizes

Note: 1. Proper filtration is recommended to prevent damage to the o-ring or sealing surface

2. Valve may be assembled with o-rings lubricated with Krytox grease

3. Valve may contain a small amount of hydraulic oil from assembly and testing of valve, further cleaning should be done on site



2300 Series Inline Relief Valve - 4MP

SIZE B	Sales Drawing	REV A
-----------	---------------	----------