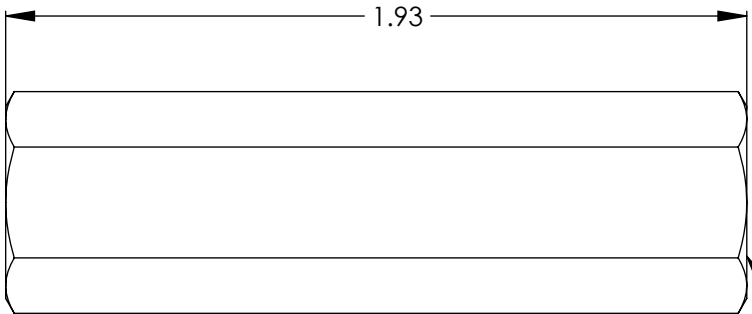
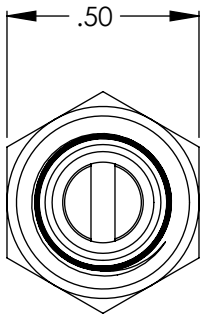
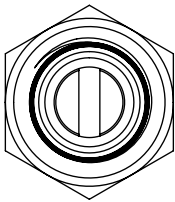
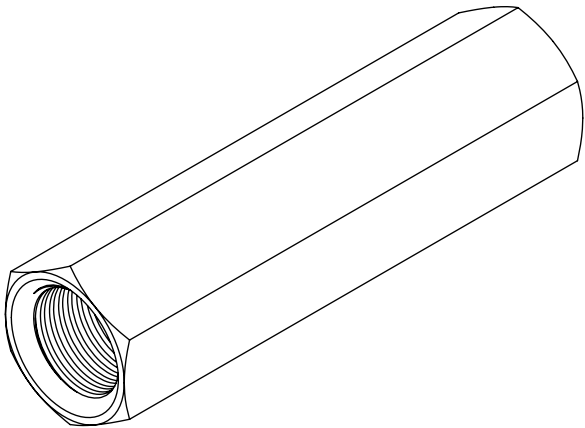


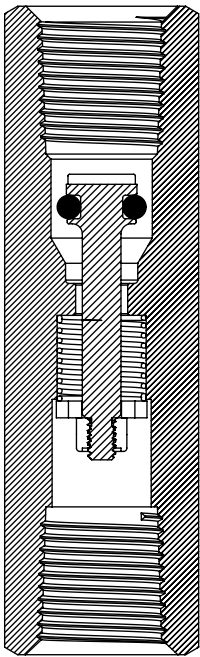
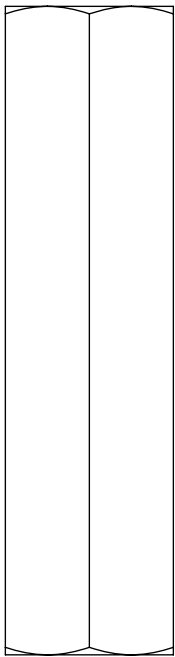
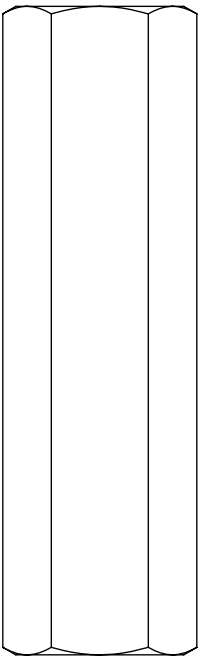
Ordering Code: H62XX-X-XXX-XX  
Example: H6203-2-2MM-1 (Stanadard Nyloc Lock Nut)  
Example: H6203-2-2MM-1-ML (Optional All Stainless Lock Nut)

Series	O-ring	Material	Connection	Crack Pressure
H6200	03 - Viton	2 - Brass	1MM - 1/8" Male NPT x 1/8" Male NPT	(Vary per Configuration)
	13 - Buna	5 - 303 SST	1MP - 1/8" Male NPT x 1/8" Female NPT	
	24 - Silicone		1PP - 1/8" Female NPT x 1/8" Female NPT	
	32 - Ethylene Propylene		2MM - 1/4" Male NPT x 1/4" Male NPT	
			2MP- 1/4" Male NPT x 1/4" Female NPT	
			2PP - 1/4" Female NPT x 1/4" Female NPT	
			XXX - (Contact Valve Check For More Configurations)	



1/8-27 NPT (2X)

H6200 Series - 1PP



Flow

**Body Material:** 303 SST, Brass  
**O-ring Material:** Buna-N, Ethylene Propylene, Viton, Silicone\*  
**Spring Material:** 302 SST - Any other spring materials consult factory  
**Lock Nut Material:** Stainless Nyloc Nut\*\*  
**Operating Pressure:** Vacuum up to 3000 psig (206.8 bar)  
**Cracking Pressure:** 1 to 20 psig (.068 bar to 1.37 bar) - Any crack pressure above or below standard crack pressure range consult factory  
**Cracking Pressure Tolerance:** 1 to 20 psig (.07 - 10.3 bar): +/- 10%  
**Temperature Range:** -40 °F to +400 °F (-40 °C to +204 °C) - Based on o-ring and body material  
**Connection Sizes:** (1/8" NPT to 1" NPT)\*\*\*

\* Standard O-ring material; Consult factory for availability of other options  
\*\* Nyloc Nut Standard; All Stainless Lock Nut available  
\*\*\* Standard connections sizes; Consult factory for availabilty of other connection sizes

Note: 1. Proper filtration is recommended to prevent damage to the o-ring or sealing surface  
2. Valve may be assembled with o-rings lubricatics or greases



H6200 Series Inline Check Valve - 1PP

SIZE		REV
B	Sales Drawing	A