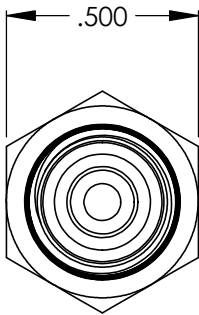
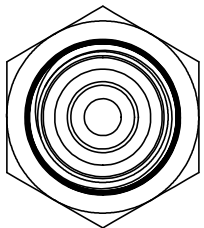
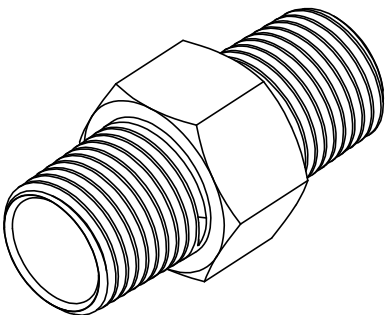
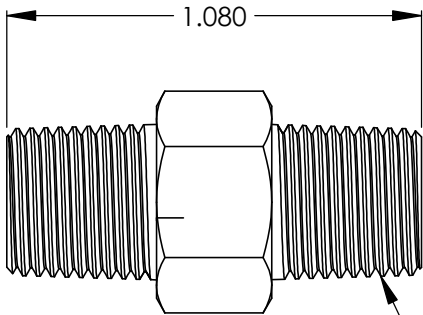


Ordering Code: LC31XX-X-X-XXX-XXX  
Example: LC3113-2-P-1MM-10  
Description: LC3100 Series Check Valve, Buna Seal, Brass Body, Internal Poly Poppet, 1/8" Male NPT x 1/8" Male NPT, 10 PSI open

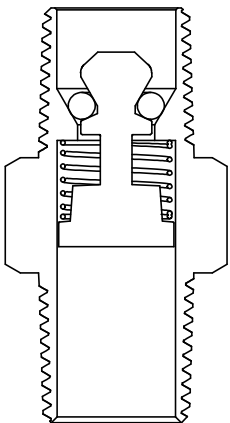
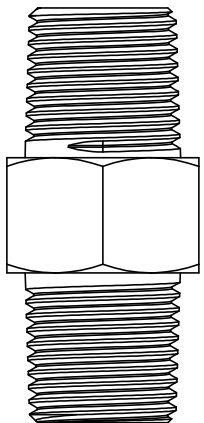
<u>Series</u>	<u>O-ring</u>	<u>Body Material</u>	<u>Poppet Material</u>	<u>Connection</u>	<u>Crack Pressure</u>
LC3100	13 - Buna	2 - Brass 5 - 303 SST	N - Nylon P - PolyPro	1MM - 1/8" Male NPT x 1/8" Male NPT 2MM - 1/4" Male NPT x 1/4" Male NPT 3MM - 3/8" Male NPT x 3/8" Male NPT 4MM - 1/2" Male NPT x 1/2" Male NPT 6MM - 3/4" Male NPT x 3/4" Male NPT	.11-20 psi



LC3100 Series - 1MM



1/8-27 NPT (2X)



Flow

**Body Material:** Brass, 303 SST  
**Poppet Material:** PolyPro, Nylon  
**O-ring Material:** Buna-N  
**Spring Matieral:** 302 SST - Any other spring materials consult factory  
**Operating Pressure:** Vacuum to 60 psig (4.137 bar)  
**Cracking Pressure:** .11 to 20 psig (.0076 bar to 1.379 bar) - Any crack pressure above or below standard crack pressure range consult factory  
**Connection Sizes:** (1/8" MNPT to 3/4" MNPT)

Note: Proper filtration is recommended to prevent damage to the o-ring or sealing surface

VALVE CHECK

LC3100 Series Check Valve

SIZE		REV
B	Sales Drawing	A