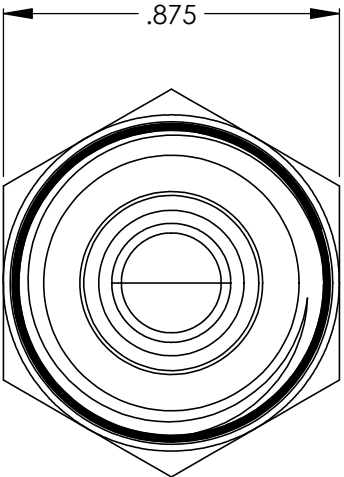
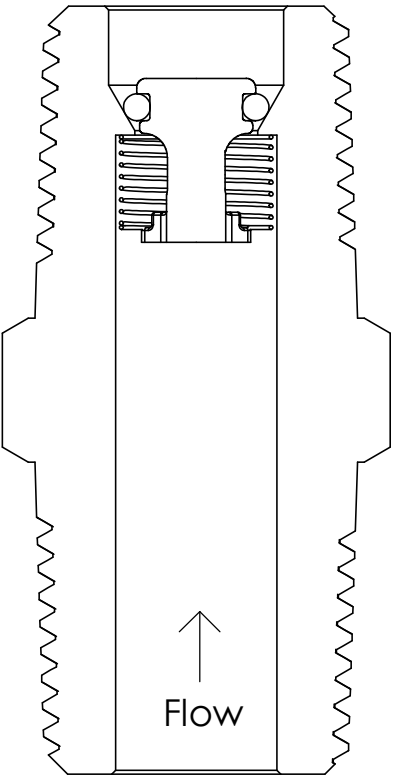
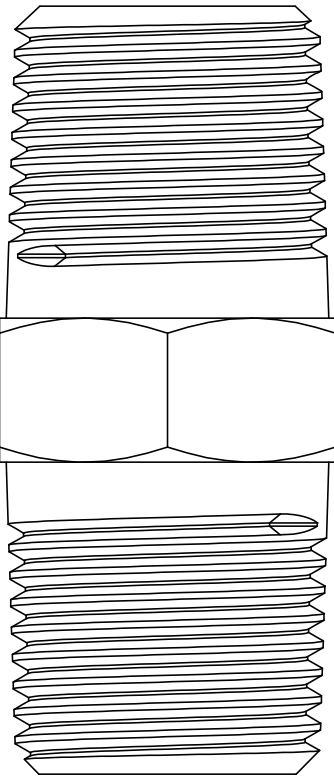
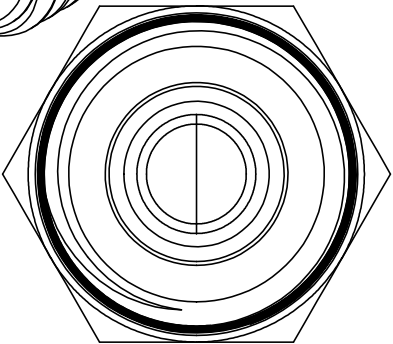
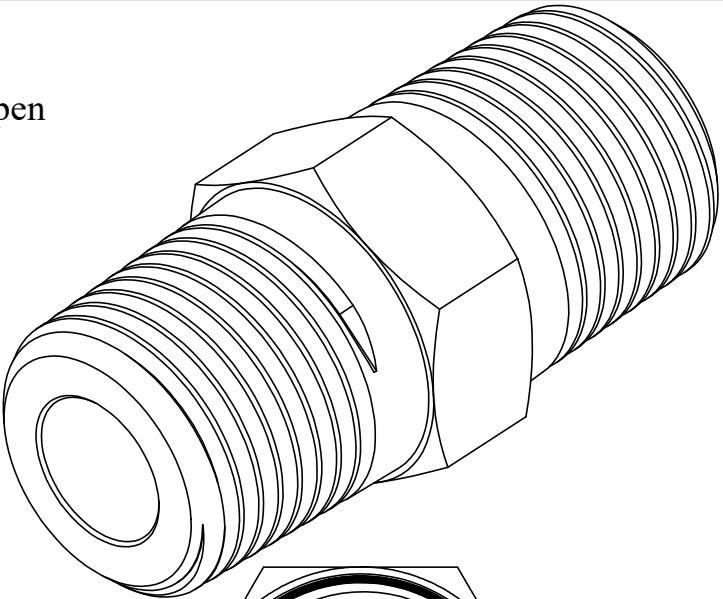
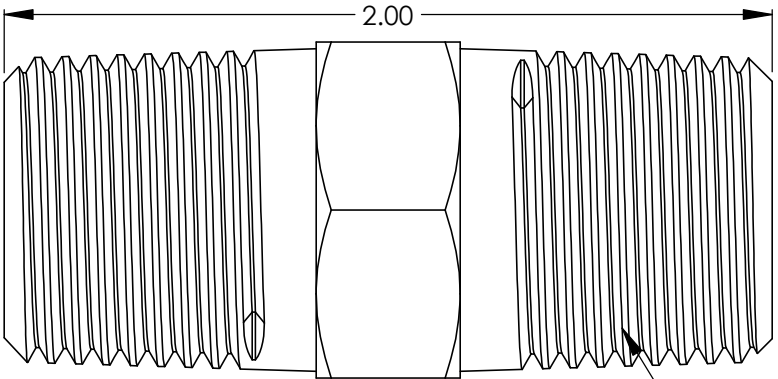


Ordering Code: LC31XX-X-X-XXX-XXX
Example: LC3113-2-P-4MM-10
Description: LC3100 Series Check Valve, Buna Seal, Brass Body, Internal Poly Poppet, 1/2" Male NPT x 1/2" Male NPT, 10 PSI open

Series	O-ring	Body Material	Poppet Material	Connection	Crack Pressure
LC3100	13 - Buna	2 - Brass 5 - 303 SST	N - Nylon P - PolyPro	1MM - 1/8" Male NPT x 1/8" Male NPT 2MM - 1/4" Male NPT x 1/4" Male NPT 3MM - 3/8" Male NPT x 3/8" Male NPT 4MM - 1/2" Male NPT x 1/2" Male NPT 6MM - 3/4" Male NPT x 3/4" Male NPT	.11-20 psi



LC3100 Series - 4MM



1/2-14 NPT (2X)

Body Material: Brass, 303 SST
Poppet Material: PolyPro, Nylon
O-ring Material: Buna-N
Spring Matieral: 302 SST - Any other spring materials consult factory
Operating Pressure: Vacuum to 60 psig (4.137 bar)
Cracking Pressure: .11 to 20 psig (.0076 bar to 1.379 bar) - Any crack pressure above or below standard crack pressure range consult factory
Connection Sizes: (1/8" MNPT to 3/4" MNPT)

Note: Proper filtration is recommended to prevent damage to the o-ring or sealing surface



LC3100 Series Check Valve

SIZE		REV
B	Sales Drawing	A